



The VOICE

100 Years
1919 For the Good of the Cause 2019

The Magazine of Kentucky Christian University



INTERNATIONAL STUDENTS
PREPARE TO REACH
AROUND THE WORLD





FROM THE PRESIDENT

DR. TERRY ALLCORN

I see KCU as having two interrelated areas of intent. The first area is to contribute to the preservation of faith in the next generation. To accomplish this, we stand alongside many organizations including the local church and campus ministries around the country.

However, KCU has an even deeper calling. The training of ministers for the local church must be our highest calling and priority. This need is a passion of mine and is much of what motivated me to return to KCU. I see us as a Preserver of the Faith in this generation and as a Provider of Kingdom workers.

Part of our role in providing Kingdom workers is to make it possible for international students to study here. You will see several of them featured in this edition of *The Voice*. Their training for ministry is a priority for us and it is a blessing to have these amazing men and women on campus. Last year alone, KCU provided over \$400,000 in scholarships to make it possible for international students to study here.

Scripture illustrates that God calls people in a variety of manners. Samuel is called as a boy as he served under Eli. James and John are called into service as adults. Almost everyone's story in Scripture is somehow unique. It is, I think, a testimony to the fact that God knows us and calls us at times and in manners best suited for us.

It is our joy to witness God calling men and women into service on this campus. I have a couple students in mind at the moment. One came to KCU already called to ministry. I think his experience may be similar to mine. I came to KCU with a sense that God had called me to ministry, but I need to be very careful that I do not expect God to call others as he called me. I spoke with a parent recently, a preacher in a supporting church. He told me his son had transferred to KCU from a state school to play a sport and get a business degree. His son is now an associate minister at a local church using his business training to serve that church. His path to ministry was distinct from mine, but just as exciting.

"It is our joy to witness God calling men and women into service on this campus."

I Want to Visit Your Church...

It is a privilege to be able to preach and share the ministry of KCU on Sunday mornings and to visit with local church leaders during the week. It is an important part of my role because it keeps me in close connection with the very churches we exist to serve. If we have not scheduled you yet, please reach out to Helen Yankey at 606-474-3258 or helen@kcu.edu.



COVENANT CHURCH PROGRAM

The Covenant Church Program was created to strengthen and enhance the relationship with our local church partners. Covenant Churches are important stakeholders who have a vested interest in Christian higher education. Covenant Churches support KCU at a minimum of \$2,400 annually. KCU is pleased to offer Covenant Churches the following benefits:

Undergraduate Scholarship:

A \$2,000 annual scholarship will be awarded to each full-time student who is a member of a participating congregation.

Graduate Scholarship:

Full-time Covenant Church staff will receive a 20% tuition scholarship for continuous enrollment in a Masters Degree program at the KCU Graduate School of Bible and Ministry.

Two Free Passes to Summer in the Son:

Covenant Church Partners receive two free passes to KCU's Summer in the Son program (a \$500 value).



Special Covenant Church Scholarship for Undergraduate Ministry Students

At KCU, we continue to be committed to the training of students for vocational ministry. Because of that commitment, we are now offering a Special Covenant Church Scholarship that will be awarded to full-time ministry students who are members of a participating Covenant Church.

KCU's Keeran School of Bible and Ministry offers preparation for vocational ministry in the following areas:

- **Advanced Biblical Studies**
- **Preaching**
- **Youth (Jr. & Sr. High)**
- **Children**
- **Family Life**
- **Small Groups**
- **Worship**
- **Christian Education**
- **Missions**
- **Church Planting**
- **Church Administration**
- **Camp Management**

1ST YEAR \$5,000

2ND YEAR \$6,000

3RD YEAR \$7,000

4TH YEAR \$8,000

The annual scholarship will be awarded to vocational ministry majors using a tiered format as follows:

www.kcu.edu/covenant

The Kentucky Christian University Covenant Church Program is designed to provide supporting churches of the University with tools to encourage their students to seek Christian Higher Education at KCU.

For information about becoming a Covenant Church Partner and/or to schedule a visit to your church from a KCU representative, please contact the Office of Church Relations by telephone at 606-474-3258 or email president@kcu.edu.

RESPONDING TO GOD'S CALL

Dr. Marvin L. Elliott, Executive Vice President

At first glance, Caroline George and Micah Adkins Estes do not appear to have much in common.

She's a freshman; he's a senior. She's a musician; he's an athlete. She's aiming toward medical school; he's a ministry student. She's local, from Russell, Kentucky; he's further from his home in Science Hill, Kentucky.

But both have responded to God's call.

As a high school senior, Caroline had made plans to attend a large state university. However, after commencement, she couldn't shake a sense of dread and the feeling that she was making a mistake. Caroline prayed—hard—that God would reveal a different plan for her life if the state university wasn't what He desired.

God influenced Caroline's life through three people: her high school choir director, Theresa Russell, a 2002 graduate of KCU; her close friend from high school, Taylor Robinette, who was then a freshman at KCU; and the KCU Worship Collective director, Assistant Professor of Worship Dr. Jamie Coates.

In the span of a few days during a high school worship tour that was led—providentially—by Mrs. Russell, Caroline was introduced to Dr. Coates. She applied and was accepted to KCU, received a scholarship award for committing to the Worship Collective, and changed her college plans because of her conviction that God had answered her prayer to provide a different plan for her life.

Caroline responded to God's call.

Micah came to KCU as a sophomore, mostly to play soccer after brief stops at two other Christian colleges.

His major was counseling psychology, and he had a plan for the future, with his goal being to work as a school counselor.

In the summer after his sophomore year, Micah served as a student worker for the Summer in the Son youth conference program. While working, he heard Tyler McKenzie speak for a main session. Although Micah grew up in church, he had never given his life to Christ until that night.

Jeremy Miller, the KCU Retention Coordinator and Men's Soccer Coach, was a significant influence in Micah's life. Then last year,



McKenzie preached in chapel at KCU, and Micah said it was as if he was speaking directly to him. McKenzie spoke of calling and purpose, and asked students to reexamine their lives. Within a week, Micah encountered a minister from Athletes in Action, a sports ministry on college campuses, changed his major, and set his sights on sports ministry as his future career.

Micah responded to God's call.

In the lives of both of these young people, God extended a call, and they responded. The call in both cases came through KCU alumni, students, faculty, and staff who were the vehicles used by God to challenge the assumptions of young hearts and to set a vision before them of what God could accomplish through them—with KCU providing the educational preparation.

On the surface, Caroline and Micah seem quite different. They are impressive young people who are dedicated to serving God through their chosen ministries.

I challenge KCU's alumni, students, faculty, and staff to look around for the "Carolines" and the "Micahs" who—with a few words of encouragement, challenge, and support—might be the next Christian physician or minister who prepares for the future at Kentucky Christian University.



YSN students Ibukunoluwa Sodamade (far left) and Claire Stoke (far right) demonstrate AED units

GIVING BACK TO THE COMMUNITY

Dr. Carol Brickey, Dean, Yancey School of Nursing



William Burton

The Yancey School of Nursing (YSN) is collaborating with The Will to Live Initiative for Carter County, KY to support the mission of saving lives in the community through raising awareness of sudden cardiac arrest (SCA), cardiopulmonary resuscitation (CPR), and automated external defibrillators (AED). On April 9, 2019, twelve-year-old William, son of Derrick and Amy Burton, collapsed at Little League baseball practice due to SCA. He was transported to a local medical facility and then airlifted to Cincinnati Children's Hospital where he was not expected to survive. William's miraculous recovery is attributed to the rapid response of those around him trained in CPR and the use of an AED by Paramedics. Through God's grace and provision, William is alive today and back to playing the sports he loves!



It was my honor to represent both KCU and the Yancey School of Nursing as we went out into the community to demonstrate this life-saving device. As I prepare to graduate and begin my career as a nurse, this experience taught me valuable lessons about caring for others.

– Zoe Deaton, Class of 2020

non-profit organization to raise awareness, train individuals in CPR and AED use, and increase the number of AEDs in our community. All in an effort to ensure that everyone in the community has a chance to live in an emergency.

Four members of the initiative, including Yancey School of Nursing Dean, Dr. Carol Brickey, are certified American Heart

Association CPR instructors.

The initiative members, along with Yancey School of Nursing students, offer education and free CPR training to individuals and community organizations. Additionally, the initiative offers CPR certification courses for \$30/person. Since the organization's initiation in June 2019, 165 individuals have been trained or certified in CPR

and 16 AEDs have been placed in the community!

Kentucky Christian University is proud to partner with those in the community and provide our students an opportunity to train others in an effort to help save lives.

William's story brought attention to the importance of early CPR, defibrillation with an AED, and activation of emergency medical services. Carter County is a very large county with no hospitals and limited ambulance services. For this reason, William's family, friends, and concerned citizens have come together to form a



A CALL TO MINISTRY LEADS TO KCU'S BIBLE & MINISTRY GRADUATE PROGRAM

*by Dr. Rob O'Lynn, Coordinator of
Bible & Ministry Graduate Program*

A growing number of students who pursue graduate education through the Graduate Bible Program come from fields outside of ministry. One such person is Justin Butler. Justin will tell you that he "had always planned on being an airline pilot." However, after much prayer and discernment, he found his way to KCU, where he majored in history. Justin was a great student. He even had an article published in an undergraduate research journal. However, history would not be the path of his future.

While at KCU, Justin served as a teaching assistant for one of his professors who preached for a small congregation near Vanceburg. When the professor was gone, he would ask Justin to fill in for him. This ignited a call to ministry, which eventually led to a part-time youth ministry position in Grayson then a full-time associate position in Maysville, Kentucky.

When Justin landed at Maysville, he decided to return to KCU for his graduate degree. He enrolled in the MA in Christian Leadership program with an emphasis in preaching. Justin will tell you that the faculty "would push me more and more to understand who I was as a confident, Christian student."

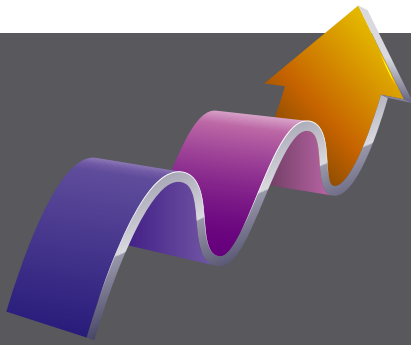
Now the Senior Minister at Highland Christian Church in Maysville, Justin has been accepted into the PhD program at Johnson University. He hopes to continue "the academic legacy established by my grandfather, KCU's fourth President, Dr. Keith P. Keeran." You can follow more of Justin's story and ministry at www.highlandcck.org/.

Realizing that obtaining graduate level education is more complicated for those already in the field, KCU has made its entire curriculum for the Graduate Program in Bible & Ministry fully online. **Visit www.kcu.edu/mingrad for more information and courses of study.**



**Keeran School of
Bible & Ministry**

GRADUATE PROGRAM



SPRING NEW STUDENT ENROLLMENT HIGHEST IN KCU HISTORY

Historically, new student enrollment for the Spring semester ranges anywhere from 15-29 new students. However, new students arriving on campus in January totaled 52, and became the largest Spring new student enrollment in the school's 100-year history.

Teamwork has been credited with this historic number as the Admissions Department worked with the aggressive recruiting efforts of the KCU athletic department resulting in students arriving in Grayson, Kentucky from across the street and around the world, including students from California, Texas, and Zimbabwe.

Welcome to all our new KCU students!



Row 1: Dr. Larry Ferguson, President (ACTC); Dr. Terry Allcorn, President (KCU)
Row 2: Calvin Lindell, Assoc. VP of Academic Affairs (KCU); Dr. Todd Brand, Dean, Academic Affairs (ACTC); Dr. Carol Brickey, Dean, Yancey School of Nursing (KCU)

NURSING ARTICULATION AGREEMENT SIGNED WITH ASHLAND COMMUNITY & TECHNICAL COLLEGE

Kentucky Christian University and Ashland Community and Technical College are collaborating to increase the number of baccalaureate prepared nurses in our region. Dr. Terry Allcorn, KCU President, and Dr. Larry Ferguson, President and CEO of ACTC, recently signed an articulation agreement between the Yancey School of Nursing and the ACTC Nursing Department. The articulation facilitates a seamless transition for students completing an Associate Degree in Nursing at ACTC into KCU's online RN-BSN program.



10TH
Annual

KENTUCKY CHRISTIAN UNIVERSITY SCHOOL OF BUSINESS PRESENTS THE

LEADERSHIP CONFERENCE



APRIL 2, 2020



UNIFIED

Winning With People

Training international students for ministry is a priority for us. Last year alone, KCU provided over \$400,000 in scholarships to make it possible for these students to study here.

INTERNATIONAL STUDENTS PREPARE TO REACH AROUND THE WORLD



by Vicky Madden, Director of Alumni Relations



Ralph Dubreus

We often accept international students whose decision to attend KCU was influenced by one of our alumni. It's always refreshing when they come with plans to return to their home countries and use their education to minister to others. We currently have students from Haiti, Zimbabwe, Kenya, and South Africa. These students recently shared their stories with us. Wow! What incredible stories and plans they have!

Ralph Dubreus, a freshman from Haiti, has already found multiple ways to get involved on campus and in the local community. He's a member of the Worship Collective, the musical group that leads chapel worship twice a week. With an interest in photography, he volunteers his time taking pictures during KCU's athletic events. He also helps out with technology in a local church.

Ralph is majoring in Business with an emphasis in Audio Tech. As a student, he's working on a project called "New Life" and plans to serve his community in Haiti after graduating. The project will focus on planting hospitals, elementary schools, and colleges throughout Haiti. It will include a live audio production to create an outdoor worship service to reach those who are neglected and outside of the church in Haiti. What an incredible way to give back!

Nephtalie Saint Fleur Elmeus taught English in South America before feeling God's call to return home to Haiti then later to KCU. She is a nursing student also participating in the KCU Choir and Worship Collective. Her desire is to serve poor people around the world, specifically in Haiti. "I want to serve those who cannot afford to go to the hospital while teaching them about the biggest Healer who ever lived, Jesus. For all God has given me, I want to show my gratitude by spreading His love through healing."



Nephtalie Saint Fleur Elmeus



Upenyu Gogo

Upenyu Gogo comes to us through connections with Hippo Valley Christian Mission, an organization founded in 1956 by KCU alums, John Pemberton and Dennis Pruett. Upenyu, at age 6, was one of the first boys to join the orphanage the Mission started in 2000. He trained at Zimbabwe Christian College to be a preacher then served with Hippo Valley's Living Proof program. Influenced by the rich history between Kentucky Christian and Hippo Valley, he dreamed of attending KCU and continuing the tradition. He is now a KCU student along with three other young ladies from Zimbabwe.

Another institution that maintains a history with KCU is Sonlight Academy, a Christian school founded by missionaries in Haiti. **Ern Pierre** is a product of this Academy. He credits his time there as pivotal in his academic and spiritual development. This is, in part, due to several KCU alumni teaching there: Warren French, Thom Wimpelberg, and Lenny Lowe. When talking about their influence in his life, Ern said "They have tremendously helped shape my philosophy in life and my vision to provide opportunities for the less fortunate through love, faith, and hope, particularly to young children who likely come from the same setting as I did." As a KCU student, he gives back by

serving as the International Students Representative on Student Council and as a referee and coach with Upward Sports in a local church. Ern understands that he is on a mission to dedicate his life to what he is passionate about while serving God's purpose and utilizing his gifts for the Kingdom.

These are only a few of the great ways our international students are serving and giving back. Another student wants to become a traveling nurse to spread God's love to those she helps. Another wants to open a business similar to Amazon in his home country before getting a doctorate degree to open up a business school. One plans to finish her nursing degree so she can serve at an orphanage in her hometown. Yet another plans to return to his country to build a mental health clinic after finishing his Counseling Psychology degree at KCU.

These students were influenced by the alumni who took Christ's command to "go and make disciples of all nations" seriously. They're fully aware of the blessing they received to be able to attend KCU and to use what they gain here to be the hands and feet of Jesus around the world. We are proud of their involvement on campus and in the local community. We're proud of the dreams they hope to accomplish. Most importantly, we're proud of their love for God and the way they let their light shine for Him.



Ern Pierre



Young Library recently hosted a breakfast for our International Students to visit with President Allcorn and share experiences with one another.

12
HAITI

4
ZIMBABWE

1
KENYA

1
SO.AFRICA

Scholarship Gifts

Andrea Damron Scholarship
Oak Grove Church of Christ,
Grayson, KY

Carole Phillips Scholarship
Oak Grove Church of Christ,
Grayson, KY

**Dr. Charles R. Gresham
Scholarship**
Oak Grove Church of Christ,
Grayson, KY

**Dr. Donald "Dick" Damron
Scholarship**
First Church of Christ,
Grayson, KY
Oak Grove Church of Christ,
Grayson, KY

Dr. Lewis Snyder Scholarship
Victoria Snyder Bradford

**Erby & Lorraine Messimer
Scholarship**
Wendell Messimer

Essick Family Scholarship
Angela Dykes

KCU Alumni Endowed Scholarship

E. Wayne Stout
M/M John M. Studebaker
Vision Home Buyers LLC,
Xenia, OH

KCU Scholarships – Undesignated

M/M Austin Archey
Ellie Krauss Cruse
M/M James T. Gibson
M/M Robert A. Sealock
Southeast Christian Church,
Louisville, KY
Sidney Verble
M/M Thomas A. Wimpelberg

**Dr. Keith P. Keeran
Scholarship**
Phillip L. DeMotte

Dr. L. Palmer Young Scholarship
M/M Jerry Provence
M/M Wallace L. Rendel

**Sadieville Christian Church
Pat Noel Memorial Scholarship**
Sadieville Christian Church,
Sadieville, KY

Skye Taylor Scholarship
M/M Barry M. Taylor

Southland Mfg. Co. Scholarship
Dr. & Mrs. Jack L. Dyer

Strother Family Scholarship
Commercial Bank Foundation
M/M Jack W. Strother, Jr.
Mimi Strother

William Peeples Scholarship
William D. Peeples

Gifts In Honor

Dr. Terry Allcorn
Dr. & Mrs. Ronald L. Oakes

J.T. Carroll
Madelyn Carroll

Gary Johnson
M/M Sean C. Olson

Gifts In Memory
Myron Barnett
Glenna D. Peterson

Martha Jordan
M/M Carl Owens

Donita Napier
M/M Thomas M. Napier

Wayne B. Smith
M/M Wallace L. Rendel

Dr. Lewis Snyder
Dr. & Mrs. John Owston

**Dr. Palmer & Elva
Young**
M/M Wallace L. Rendel

Estate Gifts

Estate of William & Frances
Kindelberger

Martha Jordan Prayer Garden Gifts In Memory

Mabel Malick
Glenda Petrey

In Honor

Dr. John & Cynde Dundon
Dr. Jeff Metcalf

Dr. Marvin & Debbie Elliott
Dr. Jeff Metcalf

Vicky Madden
Dr. Jeff Metcalf

Larry & Sonya Metcalf
Dr. Jeff Metcalf

Dr. Jeff Metcalf
Glenda Petrey

Kevin Pickett
Dr. Jeff Metcalf

Please Note: We have made every effort to ensure the accuracy of this information. Should you discover an error, please accept our sincere apology and bring it to our attention so that we can correct our records.

MEGAN RAWLINGS NAMED DIRECTOR OF DEVELOPMENT

President Allcorn has recently announced the appointment of Megan Rawlings as Director of Development. Rawlings will give leadership to the donor relationship program, grant writing, capital programs, and the annual fund. President Allcorn said, "Megan has demonstrated a strong capacity for development and is a real asset to the team. I'm pleased about the level of commitment and energy that she brings to the role."

Rawlings is no stranger to the KCU family. She began as a student in 2008, when she was determined to be a medical missionary. After a few years of nursing school, she found that the art and passion of healing the body was not for her. Instead, she realized that she wanted to help others with their spiritual health, so she switched to a different "health care" major. Rawlings stayed with KCU where she established lifelong friendships, continued her education, and deepened her relationship with God. Megan recently graduated from KCU's Bible and Ministry graduate program with a master's degree in theology.

Most recently, Rawlings was a successful Recruiter in the Admissions Department, working primarily with KCU's graduate programs.

Megan sums up her life around three loves. She loves God, who is the center of everything she does. She loves her husband, who she works alongside at Christ's Community Church in Portsmouth, OH. She loves KCU and will work diligently to ensure the financial security of the institution for future generations.

You can reach Megan at mrawlings@kcu.edu or 606-474-3298. She would love to talk to you about how you can partner with us.



GIFT LIST MENU

Kentucky Christian University is a life-changing institution. Students gain an understanding of what it means to be a Christian leader, not only in their field, but also in their church.

It is by the grace of God that our students have been successful examples of what a school can do when it is saturated in prayer and God's presence.

This year alone we have seen amazing victories:

- Our social work program has a 100% job placement rate.
- Our nursing program trained our students so well that 100% passed their NCLEX the first time they took the test.
- Our biology (pre-professional) programs have above a 90% acceptance rate into the students' first choice medical school.
- Our Bible and Ministry program has trained church ministers and has a 100% job placement rate as well as 100% graduate acceptance rate.

These are just a few examples that prove KCU excellence through God's kindness. To maintain this level of quality in our students, there are a few needs we ask you to prayerfully consider helping us meet.

To be included in what God is doing at Kentucky Christian University, you can contribute your selected donation at www.kcu.edu/give.

If you would like more information, please contact Megan Rawlings at 606-474-3298.

Classroom Computers

Computers open more doors than any other teaching tool. Having updated computers in all of our classes will ensure smoother delivery of content maximizing class time.

THE NEED: We need 60 new computers and estimate them at \$500 each.

Outdoor Lighting

By the grace of God, KCU has been able to remain one of the safest campuses in the nation with an extremely low crime rate. To continue creating a safe environment by implementing brighter lights, and to keep costs low in the long run, we are converting to LED lights in all our outdoor lighting.

THE NEED: We need 100 lights at \$800 each.

Cars and Vans

God has blessed us with faithful cars in our past and due to our record high incoming class this year, we are in need of more reliable vehicles. Help meet this need.

THE NEED: We need two reliable cars and two reliable vans at approximately \$25,000 each.

Updating Dorm Rooms

Since their construction, many memories have been made in Dale and Pifer Halls. What a privilege and joy for KCU to still have both in full use. Nonetheless, they need to be updated and you can have a part in their renewal.

THE NEED: Pifer has 30 rooms and Dale has 57 left at \$1,000 each.

Lusby Classrooms

Built in 1972, Lusby Center now needs a facelift and technology enhancements. This includes updating the audio/visual tools, lecture podiums, new classroom chairs, lighting, carpet, drywall renewal, and fresh paint.

THE NEED: Renovate five classrooms at \$20,000 each.

Benches and Trash Cans

With the recent renovations to beautify our campus, we are eager to continue the project with the addition of new benches for students to enjoy and new trash cans that ensure our newly remodeled campus stays clean. We are working with a local trade school to produce these.

THE NEED: We need 20 trashcans and 20 benches at \$500 each.

Grades 7-12
June 21 - 26, 2020

Grades 9-12
June 14 - 19, 2020

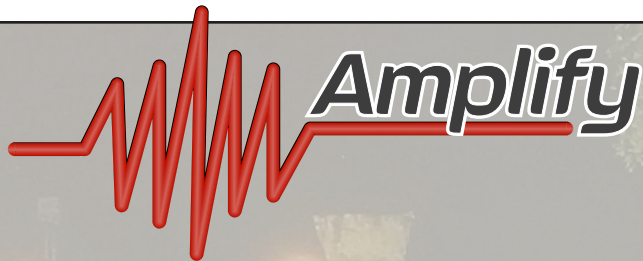
FLIP TURN'D



summerintheson.org
KENTUCKY CHRISTIAN UNIVERSITY • GRAYSON, KY

summer
in the SON

At SITS 2020, students will learn what it means to live a “Flip-Turn’d” life, instead of living according to how culture says we should live. We will look at various stories of how Jesus modeled a new way to live—a better way to live.... but it may seem counter-intuitive. When the world values control, Jesus values surrender. When the world values greed, Jesus values generosity. When the world values “my happiness” above all, Jesus values a real, life-changing relationship with God. At SITS 2020, students will be encouraged, challenged, and celebrated as they journey through discovering the life that God has called them to find and own for themselves—the “flip-turn’d” life.



Summer in the Son (SITS) 2020 has a special program for high school students interested in leading worship! Do you play drums? Guitar? Keys? Do you sing? Run tech? This group is for you! Amplify will rehearse during week 1 of Summer in the Son (June 14-19), attending SITS main sessions, concerts, rehearsing during designated times throughout the day, and will tour during the following week (June 20-25).

Amplify is directed by Dr. Jamie Coates, KCU worship professor and director of the KCU Worship Collective. Audition materials must be submitted by April 1, 2020. Students will be informed of audition results by April 15, 2020. Music, which will need to be learned prior to rehearsal week, will be sent to Amplify members in late April.

For more information about Amplify, visit our website at www.kcu.edu/amplify.



Proclaim

sermon development from KCU faculty. Students will attend one daily class that focuses on Biblical study and one daily class on sermon development. At the end of the week, students will present a 5-10 minute sermon for evaluation from a professional panel. Participants will present a sermon and potentially earn a scholarship to KCU!

Students will be able to participate in large-group exercises with their respective youth groups, including worship time and evening meals, as well as being housed with their youth group. If they attend SITS on their own, there will be a special PROCLAIM group for them. For more information visit our website at www.kcu.edu/proclaim.

Do you have students in high school who are feeling a call to ministry? Summer in the Son (SITS) 2020 has a special workshop for students who are interested in pursuing a call to ministry. “PROCLAIM” is an immersive “preaching lab” experience that will provide students with practical instruction in Biblical study and



MILLER RECEIVES FRANK JEWELL AWARD

Kentucky Christian University Men's Soccer Head Coach, Jeremy Miller, was selected as the 2019 Frank Jewell Award recipient. This award is presented annually to an individual who has displayed Christian character and integrity while coaching soccer within the NCCAA.

The award is presented by the National Intercollegiate Soccer Official's Association (NISOA) in memory of Frank Jewell, NISOA liaison with the NCCAA from 1983-2010. Frank was a lifetime member of NISOA, a Hall of Fame member, Honor Award designee, Robert Sumpter Excellence in Teaching recipient, and Distinguished Service Award winner. Each year's honoree is selected by the NCCAA Executive Director and a representative from NISOA with the aim of highlighting Mr. Jewell's legacy.

Coach Miller exemplifies the traits and characteristics for which this award stands and we are extremely proud of Jeremy's efforts with the men's soccer program. Please join us in congratulating him for the outstanding job he does in representing his team, KCU, and the Kingdom. Well done!



KCU/APPALACHIAN ATHLETIC CONFERENCE — YEAR 1 —

In the storied history of Kentucky Christian University athletics, the Knights have primarily operated within the confines of the National Christian College Athletic Association (NCCAA) winning 104 championships between national (23) and regional (81) titles. But 12 years ago, when KCU added football as an intercollegiate sport, the necessity to join another athletic organization became apparent, so Kentucky Christian became a member of the NAIA (National Association of Intercollegiate Athletics).

As additional sports were added, once again came the need for an additional place to compete. This forced the inevitability of an NAIA conference affiliation into a reality. With that in mind, the athletic administration sought to bring the vast majority of KCU athletic programs under one umbrella ... the Appalachian Athletic Conference (AAC). The AAC now houses 15 of the 19 athletic offerings in the department with archery, bass fishing, cheer and football participating in sport-specific organizations

currently not offered by the AAC. It was a bold, and successful move providing KCU athletes more opportunities to demonstrate their abilities.

Kentucky Christian, now the "new kids on the block", must prove themselves to the AAC membership. Thus far, fall sports exceeded their conference pre-season rankings in four of the six sports, with volleyball registering the first official AAC conference win and becoming the first KCU program to earn a spot in the conference post-season tournament. Winning any post-season conference tournament grants the winner a ticket into the NAIA national tournament for that particular sport. With winter sports in full swing, the focus now turns to earning a post-season berth in men's and women's basketball and as of this article, both would qualify.



By the way, all but one sport so far has been voted to finish last by the conference coaches. However, six-of-eight teams have exceeded their expectations. Go Knights!

THE KCU FAMILY OF ATHLETICS

Men's & Women's
Basketball

Men's & Women's
Soccer

Men's & Women's
Golf

Men's & Women's
Bass Fishing

Football

Men's & Women's
Track & Field

Men's & Women's
Cross Country

Women's
Volleyball

Men's & Women's
Archery

Men's
Baseball

Men's & Women's
Cheer

Women's
Softball



Insider

News and Information for Alumni & Friends of Kentucky Christian University

Alumni Office

Vicky Madden
Alumni Director
vmadden@kcu.edu • 606-474-3118

Felicity LeFevre
Coordinator of Alumni & Campus Events
flefevre@kcu.edu • 606-474-3282

Helen Yankey
Alumni/Church Relations
helen@kcu.edu • 606-474-3258

 Like us on Facebook • kcualumni

 www.twitter.com/kcualumni



VICKY MADDEN NAMED DIRECTOR OF ALUMNI RELATIONS

Kentucky Christian University's Alumni Department was blessed with nine years of leadership from Jeff Greene. He recently left to accept a position with International Disaster Emergency Services (IDES). His presence is certainly missed on campus. We greatly appreciate his years of service and dedication to KCU and wish him and Patty all the best on this next adventure.

Following his departure, Vicky Madden ('12) has been named Director of Alumni Relations. She has served on the advancement team for the past five years and has a real heart for both the University and those of us who have graduated from here. Congratulations, Vicky!

Be on the lookout for communications from her about upcoming alumni activities. Vicky can be reached at (606) 474-3118 or vmadden@kcu.edu. Feel free to reach out to update your information or share your story. She'd love to hear from you!

SAVE THE DATE!

We're looking forward to another great KCU Homecoming this fall. Our annual Alumni Banquet will feature Phil Martin as the main speaker. Phil is currently the lead minister at First Christian Church in Salem, IL. Phil and his wife, Kim, are both 1985 graduates.

Along with our banquet, tailgate, and football game, we'll also announce the winner of our first Alumni Wars (see the back page of *The Voice* for more information). You won't want to miss the fun and fellowship. Mark your calendars now and watch for more details about other weekend activities.

"In the same way, let your light shine before men, that they may see your good deeds and praise your Father in heaven." (Matt. 5:16)



ALUMNI SPOTLIGHT

MARK STUART - LOSING MY VOICE TO FIND IT

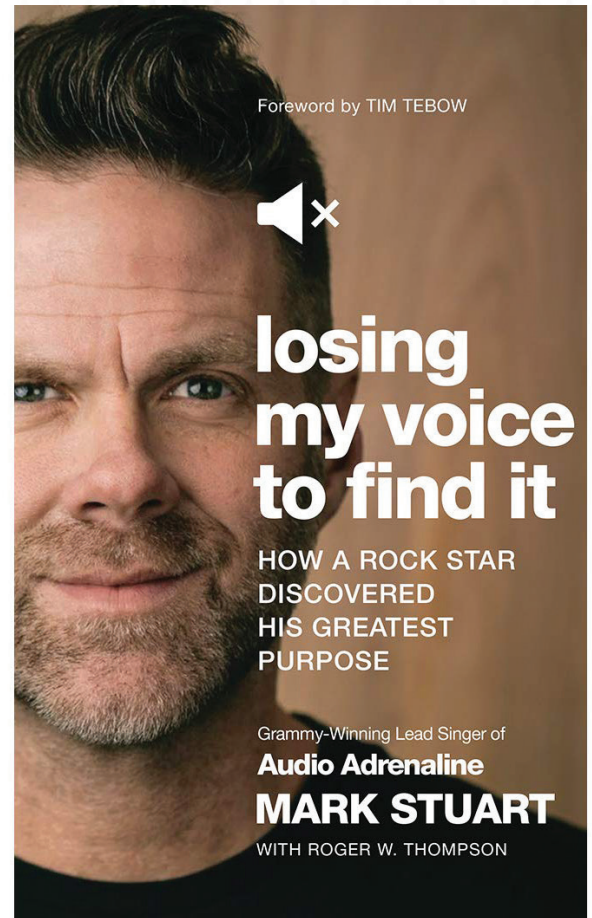
by Dr. Jamie Coates, Assistant Professor of Worship

David, the “sweet psalmist of Israel,” (2 Samuel 23:1, NLT) writes, “He has given me a new song to sing, a hymn of praise to our God. Many will see what he has done and be amazed. They will put their trust in the Lord” (Psalm 40:3, NLT).

God is still giving new songs to his children. Take Mark Stuart ('91), for example.

In his new book, *Losing My Voice to Find It: How a Rock Star Discovered His Greatest Purpose*, Stuart describes a lifetime of singing new songs. From his time in choirs, vocal ensembles, musicals, and worship-leading groups during his teenage and college years to his years with the Grammy Award-winning band, Audio Adrenaline, singing new songs has always been second nature to Stuart. Glorifying God with his songs has always been his heart's desire.

As Mark explains in his book, his days of singing with his physical voice have come to an end due to spasmodic dysphonia, which is an incurable vocal disorder caused by muscle spasms which interrupt the pathways between the brain and the vocal cords. (Stuart 231) However, spasmodic dysphonia has not silenced Mark's “hymn of praise to [his] God.” No, instead of being silenced, Mark sings a different type of song: the song of a surrendered life of service on behalf of the people of Haiti.



dignified hospitality jobs for Haitian people. We saw God do more than we could ever imagine. It became apparent that music was just a chapter of my life that led to the next chapter – all perfectly authored by our Creator.” (Stuart 236)

God has given Mark Stuart a new song to sing. The song of a surrendered life of service is a song that honors God. As the psalmist David declares, “Many will see what [God] has done and be amazed.”

What new song has God put in your heart? Whatever it is, sing it. Sing it for the glory of God.

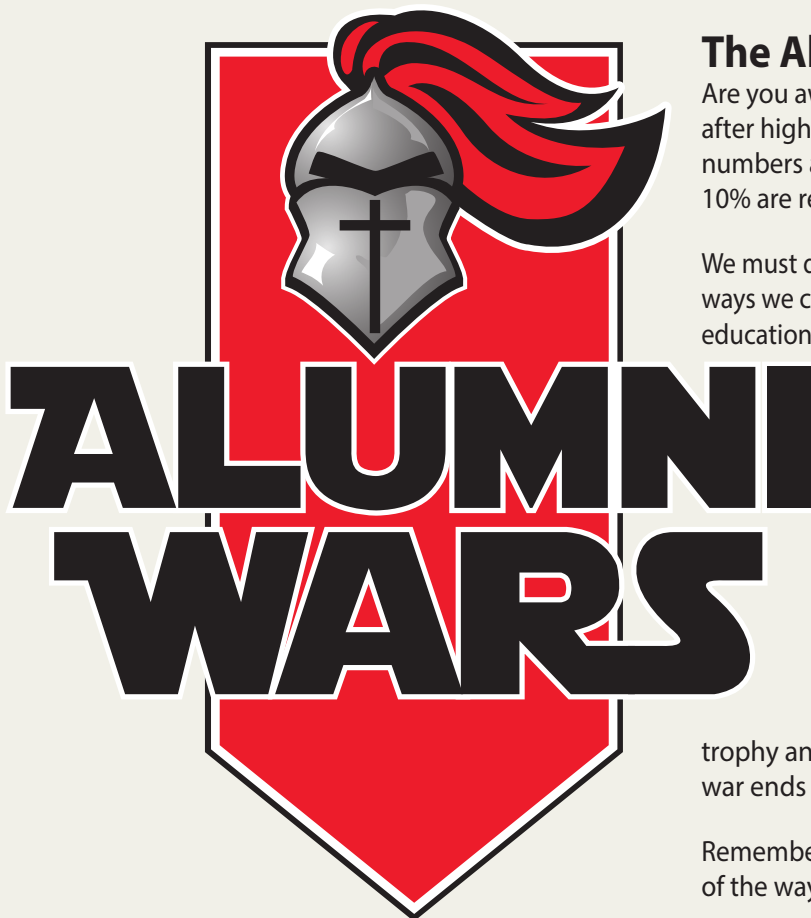
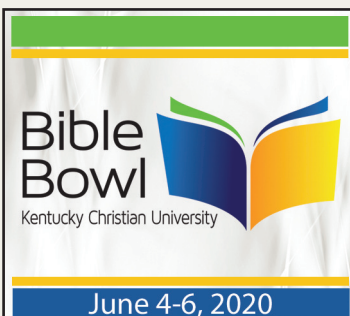
Describing the current song of his life, Stuart writes, “...God planted a new song in my heart. My creative and entrepreneurial energy shifted from making records to fighting the orphan crisis in Haiti. We would go on to build multiple Children's Villages and develop job creation initiatives to help alleviate Haiti's poverty-driven child abandonment epidemic. We launched Haiti Made, an artisan and manufacturing business that now employs nearly one hundred Haitian employees. We built IKONDO, a mission-trip hosting facility that introduces a new way to visit Haiti, focusing on providing sustainable,

Phone 606-474-3000 • Fax 606-474-3155

Postmaster send address changes to:

The Voice
Kentucky Christian University
100 Academic Parkway
Grayson, KY 41143-2205

SPRING 2020 • www.kcu.edu



The Alumni Decade Wars

Are you aware that seven out of 10 students are leaving the church after high school graduation? Some studies are showing that these numbers are inching closer to eight out of 10. Unlike in the past, only 10% are returning to the Church after marriage and children.

We must do something about it. Christian Universities are one of the ways we can combat this trend, but we must make this Christian education affordable. We are challenging you to help change those statistics so that 100% stay in the Church and carry out the word of God.

Here's how you can help:

We are challenging our alumni from each decade to donate toward KCU's scholarship fund. In order to endow a scholarship with the decade from which you graduated, you must reach a minimum of \$10,000. Rally your troops and prepare because this is a competition. The decade who donates the most toward lowering the cost for future Christian leaders, will receive a

trophy and bragging rights at the 2020 Homecoming banquet. The war ends September 30, 2020.

Remember friends, we are fighting a Spiritual battle, and this is one of the ways we can fight the good fight. Afterall, this means war!

Donations can be made online at kcu.edu/alumni-wars or by sending a check, payable to Kentucky Christian University

Please indicate your decade year in the memo line. Send checks to:

Kentucky Christian University • Attn: Business Office • 100 Academic Parkway • Grayson, Kentucky 41143